

LarsLap Model "K"

**Hand held machine for very quick and easy use.
For globe, control and safety valves**



É Suitable for valves with flat and/or angle seat

ø 8 -150 mm (1/4" - 6")

É Extended grinding plates available

É Absolutely flat sealing surface

É Guiding plates for a more precise grinding of flat seats

É Available with compressed air drive unit (6-7 bar), electric battery drive unit or electric 110/220V drive unit.

É All drive units are reversible in both directions

É Infinity variable grinding speed for close control of surface finish

É Self adhesive grinding discs for fast attachment on the grinding plates and grinding cones

É Only three sizes of abrasive discs required for full seat size range

É Supplied with rough, medium and fine grinding discs

É Self-adhesive grinding discs 40 to 1000 grit are available.

É Diamond grinding discs available.

*Very easy to use
Precise É Portable É Durable É Cost efficient*

**Excellent results
Short cycle times**

LarsLap valve grinding and lapping machines have been specially engineered for accurate on-site, and in the workshop restoration of all industrial valve seats to their original specification.



VALVE GRINDING SYSTEMS

LarsLap

A selection of standard models. Other configurations and accessories are available on request.

K-A 65

Conical seats
Ø8-65mm
(1/4+ . 2 1/2+)
Goble & safety
valves.
Part no:2000110

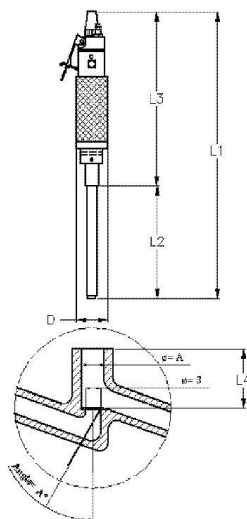
K-B 100

Flat seats
Ø8-100mm
(1/4+ . 4+)
Goble & safety
valves.
Part no:2000120

K-AB 65/100

Flat sats Ø8-100mm
(1/4+ . 4+)
Conical seats Ø8 . 65mm
(1/4+ . 2 1/2+)
Goble & safety
valves.
Part no:2000100

| | | | |
|---|-----------|-----------|-----------|
| Air drive unit 6-7 bar (Air) | " | " | " |
| Electric battery drive unit 12V (ELACC) | as option | as option | as option |
| Electric cord drive unit 110/220V (ELCO) | as option | as option | as option |
| Drive shaft short | " | " | " |
| Drive shaft long | " | " | " |
| Centralizing cone I | " | " | " |
| Centralizing cone II | " | as option | " |
| Centralizing cone III | " | as option | " |
| Grinding plates for flat seats Ø8-100mm (1/4ö ó 4ö) | as option | " | " |
| Grinding plates for flat seats Ø100 ó 150mm (4ö - 6ö) | as option | as option | as option |
| Guiding plates for grinding plates Ø8-100mm (1/4ö ó 4ö) | as option | " | " |
| Guiding plates for grinding plates Ø100-150mm (4ö ó 6ö) | as option | as option | as option |
| Grinding cones in angle 15, 30, 45° Ø8 ó 65mm (1/4ö ó 2 1/2ö) | " | as option | " |
| Cone segments for conical seats in different angle Ø8-150mm. (2 1/2 - 6ö) | as option | as option | as option |
| Rough, medium and fine grinding discs Ø17mm+20mm+25mm (0.67"+0.79"+1") | " | " | " |
| Transport and storage case with necessary hand tools | " | " | " |



L1= 440 mm or 560 mm
L2= 170 mm or 290 mm
L3= 270 mm
L4= 25 - 300mm
D= 50 mm
Amin= 18mm
B min= 0mm
Standard cones.
15°-20°-30°-37,5°-45°
Carrying case Model K-AB:
400x530x240mm
Total weight Model K-AB:
20 kg (42lb)



LarsLap K-AB 65/100 DUO



LarsLap K-B Air



Mounting a grinding cone on the shaft



LarsLap K-AB 65/100 Air